



LESHER CENTER FOR THE ARTS HOFMANN THEATRE LIGHTING INVENTORY

1601 Civic Dr. Walnut Creek, CA 94596 (925) 295-1400 LesharArtsCenter.org

<u>INSTRUMENT TYPE</u>	<u>WATTAGE</u>	<u>TOTAL</u>	<u>IN PLOT</u>	<u>SURPLUS</u>
6X9 Strand Leko	1Kw	21	00	21
6X12 Strand Leko	1Kw	41	00	41
6X16 Strand Leko	1Kw	33	00	33
19° ETC Source-4	750w	76	46	30
26° ETC Source-4	750w	47	21	26
36° ETC Source-4	750w	47	21	26
19° ETC Source-4 + Seachanger CYMG	750w	02	02	00
26° ETC Source-4 + Seachanger CYMG	750w	02	02	00
36° ETC Source-4 + Seachanger CYMG	750w	02	02	00
PAR ETC Source-4 (MFL)	750w	18	8	10
PAR 64 MFL	1Kw	52	00	52
8" Fresnel	2Kw	44	12	32
ETC Selador D60 Lustr+ (MR Lens)	LED	22	22	00
ETC ColorSource Cyc	LED	18	09	09

MOVING LIGHTS:

<u>INSTRUMENT TYPE</u>	<u>WATTAGE</u>	<u>TOTAL</u>	<u>IN PLOT</u>	<u>SURPLUS</u>
**VARILIGHT 2500 SPOT	HTI 700w	2	2	0
**VARILIGHT 1100TS	1000w	5	5	0

FOLLOWSPOTS:

<u>INSTRUMENT TYPE</u>	<u>WATTAGE</u>	<u>TOTAL</u>	<u>IN PLOT</u>	<u>SURPLUS</u>
Phoebus Ultra Arc II Long Throw	HTI 400w	02	02	00
Robert Juliat Super Korrigan	HMI 1200w	02	02	00

INSTRUMENT ACCESSORIES:

STRAND PATTERN HOLDERS: 15
SOURCE-4 PATTERN HOLDERS (A Size): 15
SOURCE-4 PATTERN HOLDERS (B Size): 15
6" TOPHATS: 12
8" TOPHATS: 15
6" BARN DOORS: 20
8" BARN DOORS: 20

CABLE: STAGE PIN CONNECTOR

(Cable lengths are approximate and may be subject to change.)

50 @ 10'
50 @ 20'
05 @ 50'
05 @ 100'
50 @ TWOFER

- Lighting Console: ETC ION 2048 w/ 2x20 and 1x12 fader wings (Version 3.1.5.8)
- 288 Dimmers at 2.4k each
- Designer remote video available at the tech table in the house (ETCnomad Puck Lighting Controller 1,024)
- All lighting instrument tails are stage pin connectors

*Please get a new lighting inventory each time you design at lesherartscenter.org. Inventory is subject to change without notice.

**These units are not part of the standard house plot. Additional rental charges do apply.

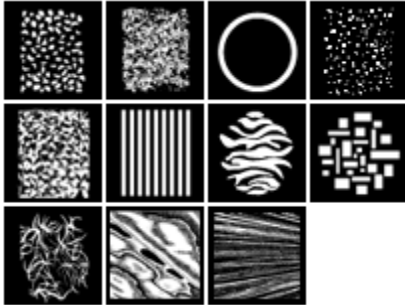
SUPPLEMENTAL RENTAL INVENTORY

Please contact the LCA Production Services Supervisor at (925) 295-1400 for additional information, availability and scheduling requests.

MOVING LIGHT INFO

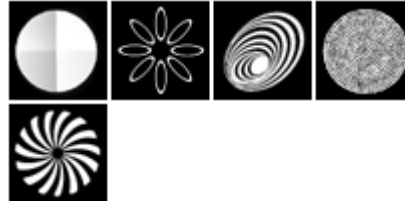
VL2500 Gobos:

STATIC GOBOS



- #0 - Open
- #1 - (7002) Pebbles
- #2 - (7025) Dust Breakup
- #3 - (6001) Medium Circle
- #4 - (5011) Night Sky
- #5 - (5501) Leaves
- #6 - (4202) Vertical Bars
- #7 - (7008) Waves
- #8 - (7015) Block Breakup
- #9 - (5523) Tribal Breakup
- #10 - (5009) Liquid Texture
- #11 - (7029) Alpha Rays

ROTATING GOBOS



- #0 - Open
- #1 - (8004) 4 Facet Prism
- #2 - (6011) Circle of Ovals
- #3 - (4316) Hypno Spiral
- #4 - (6990) Spiral Stones
- #5 - (4305) Pinwheel

VL1100 TS GOBOS:

STATIC GOBOS



- #0 - Open
- #1 - (7030) Ice Breakup
- #2 - (5501) Leaves
- #3 - (5523) Tribal Breakup
- #4 - (7015) Block Breakup
- #5 - (6012) Circle Of Ovals 2

Special Notes to the Lighting Department

Welcome to the Leshar Center for the Arts. This sheet is intended to make your upcoming tech time as smooth as possible.

- The Leshar Center for the Arts maintains a permanent house plot, which may not be altered. We invite you to use the house plot as a foundation to build on as it includes many of the basic washes you may need. House plot units must remain in their hang positions as circuited and as focused.
- The lighting console, remote focus unit, and follow spots, if used, must be operated by LCA staff and the crew used for the hang must consist of LCA approved workers. To approve someone not already on our list, please contact the Production Services Supervisor at (925) 295-1400.
- The nine surplus ColorSource Cyc units are intended for use as a ground cyc system. In this configuration each unit has a DMX footprint of 7 addresses for a total footprint of 63 addresses for the full nine unit system. For use of these units for other purposes please contact the Production Services Supervisor at (925) 295-1400.
- The sooner the design gets to us and we are able to check it the better. Your contract requires that all information (plot, instrument schedule, rental requests etc.) be submitted to the LCA no later than four weeks prior to your load-in. If your information is received after the four-week deadline, inventory and rental requests cannot be guaranteed and implementation of your design may be affected.
- The grand drape and all doors must be able to close without interference from lighting equipment, e.g., instruments, barn doors, cabling. Frequent strikes and restores may be necessary during the run of your show so cable breaks and labels should be used when appropriate. Unless specifically pre-authorized, all cabling methods are subject to the approval of the LCA electrician on site.
- Only stage management and LCA operators are permitted in the booth. All other technical staff must have their own ticket to gain access to the house during a performance. If you wish to view any performance from the house (including opening night) you must obtain a ticket from your producer.
- Please- no food or drink onstage, in the booth, or in the house.
- Your producer has been sent a detailed information package concerning every aspect of the LCA's operation, including lighting. Additional information about our facilities is available at lesherartscenter.org.