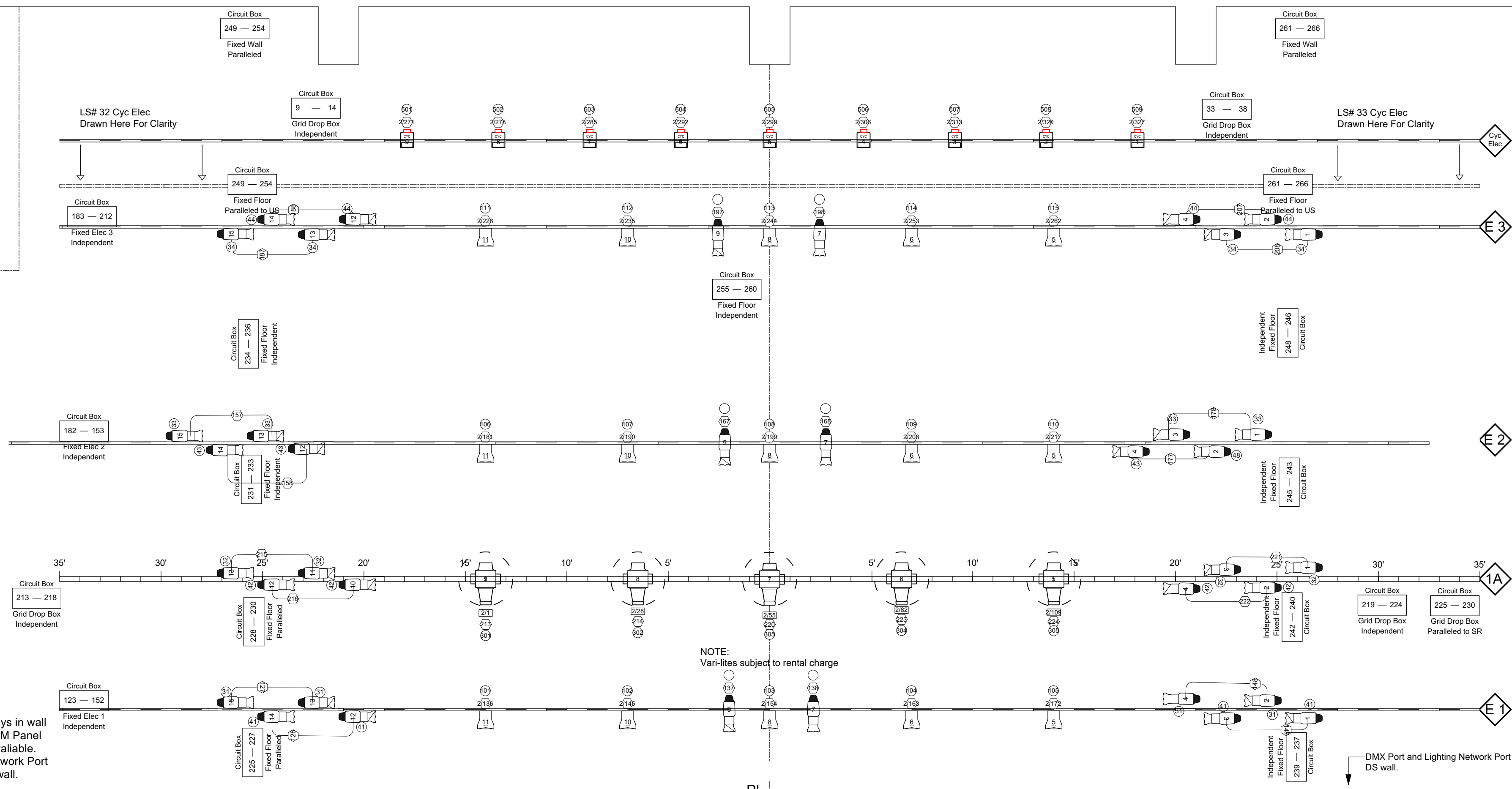


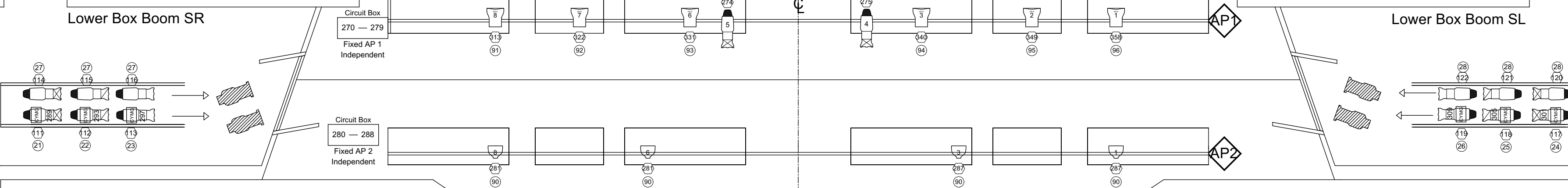
Orchestra Shell Storage Position



LS#41 STORAGE
LS#40
LS#38 REAR CURTAIN
LS#38 CYC
LS#37
LS#36 US_TABS
LS#35
LS#34
LS#33 CYC ELECTRIC
LS#32 BLACK SCRIM
LS#31 ELEC#3
LS#30 LEGS#3
LS#29 BORDER#4
LS#28
LS#27
LS#26
LS#25
LS#24 ORCH_SHELL#3
LS#23
LS#22
LS#21 MS TRAVELLER
LS#20
LS#19 ELEC#2
LS#18 BORDER#3
LS#17
LS#16 ORCH_SHELL#2
LS#15
LS#14
LS#13
LS#11 DS_TABS
LS#10 ELEC_1A
LS#9
LS#8 BORDER#2
LS#7 ORCH_SHELL#1
LS#6 LEGS#1
LS#5
LS#4 ELEC1
LS#3 BORDER#1
LS#2 MAIN CURTAIN
LS#1 HEADER/SCREEN

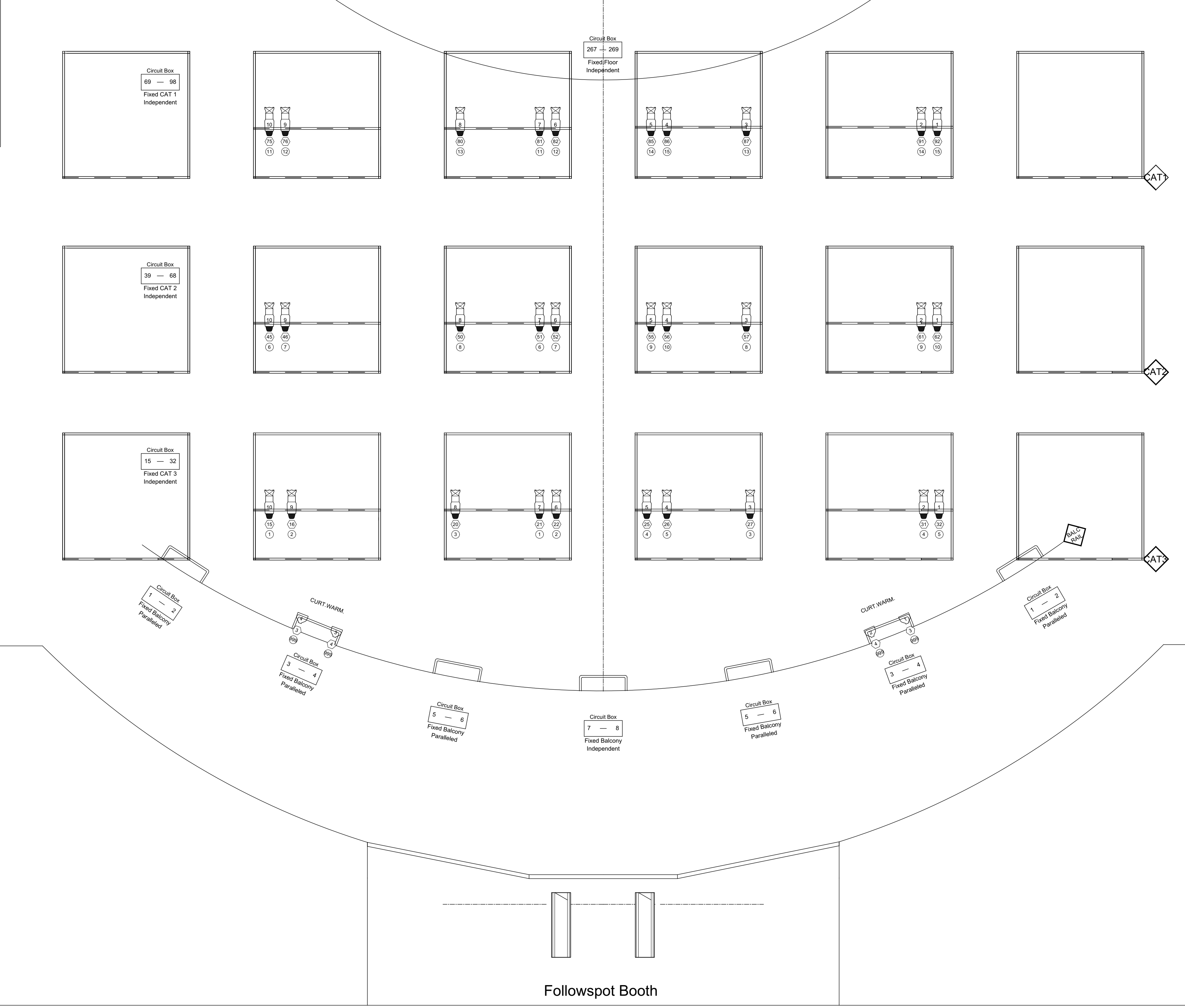
Lower Box Boom SR

Lower Box Boom SL



Upper Box Boom
Drawn Here for Clarity

Upper Box Boom
Drawn Here for Clarity



KEY

	ETC Source-4 PAR MFL 750W		ETC Color Source Cyc
	Strand or Altman Parcan MFL 1KW		Robert Juliat Super Korrigan Followspot
	Strand Fresnel 8' 2KW		Vari-lite VL1100 TS
	ETC Source-4 ERS 750W+		NOTE: Vari-lites subject to rental charge
	Seachanger CYMG Profile		
	ETC Source-4 ERS 36' 750W		
	ETC Source-4 ERS 26' 750W		
	ETC Source-4 ERS 19' 750W		
	Strand Leko ERS 6x16 1KW		
	Strand Leko ERS 6x12 1KW		
	Strand Leko ERS 6x9 1KW		
	ETC D60 Lustr+ Note: D60 have MR lens		

Leshner Center for the Arts

 1601 Civic Drive Walnut Creek CA 94596
 (925) 295-1400 lesnerartscenter.org

Hofmann Theatre House Light Plot

Revised 8/2024
 By: 92
 House plot units cannot be moved.

Scale: 1/4" = 1'